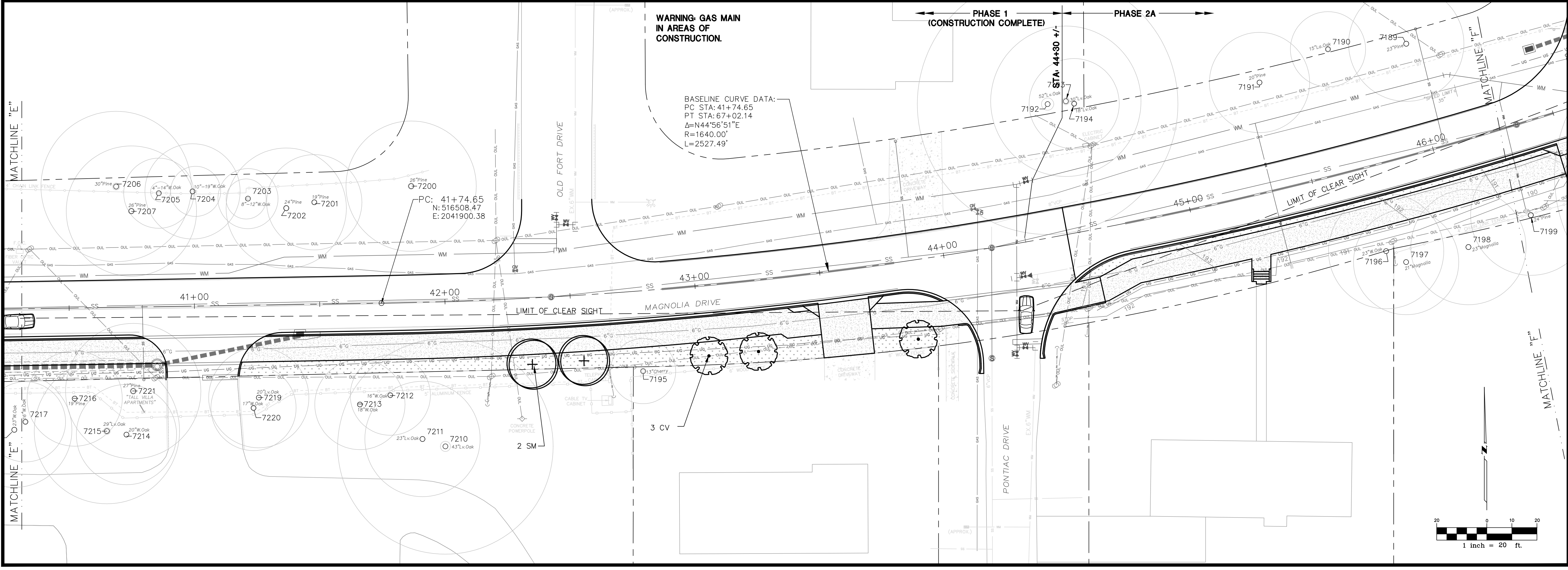


C:\Users\jivi1554\AppData\Local\Temp\AcPublish_15240_magnolia-landsc.dwg 02/17/2017 04:34:07 PM



JOB NO. 100038929
DRAWN YC
DESIGNED PF
CHECKED OC
SHEET L4

ORIGINAL FEB. 17, 2017
REVISIONS:
1 _____
2 _____
3 _____
4 _____
5 _____

TASK
LANDSCAPE PLAN

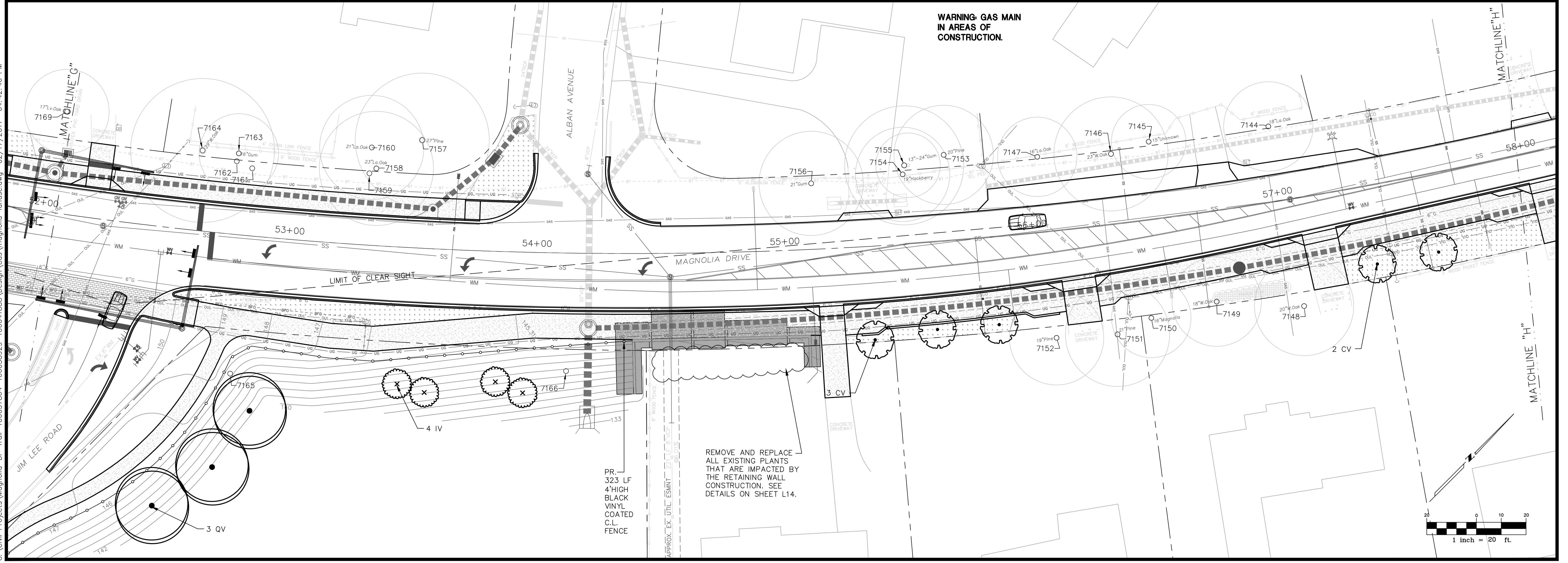
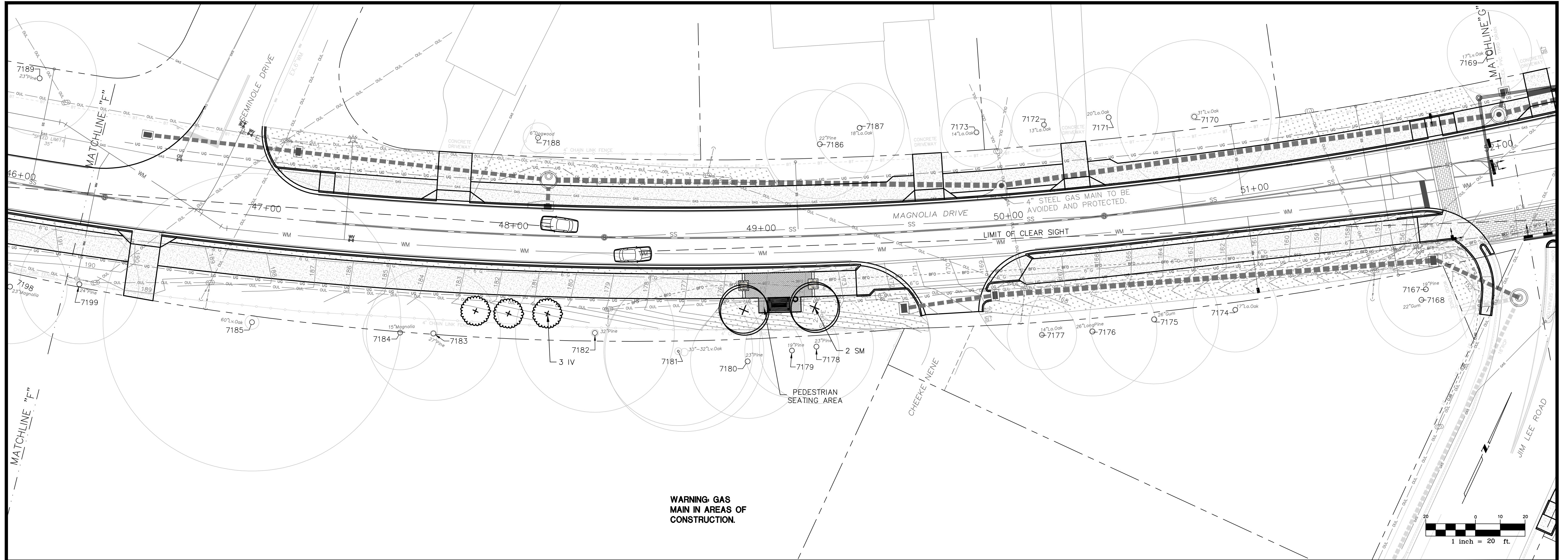
PROJECT
Magnolia Drive Multi-Use Trail and Water & Sewer Replacement from Pontiac Dr to Diamond St



CLIENT

ATKINS
 2659 N. Monroe St. Building C
 Tallahassee, Florida 32303
 850.575.1800
 FPR Certificate of Authorization No. 24

G:\Civil Projects\Magnolia-Dr-Trial-100037864-100038929-100041888\Design\Cds\magnolia-landsc.dwg 02/17/2017 04:42:46 PM



JOB NO. 100038929
 DRAWN YC
 DESIGNED PF
 CHECKED OC
 SHEET L5

ORIGINAL: FEB. 17, 2017

REVISIONS:	1	2	3	4	5

TASK
LANDSCAPE PLAN

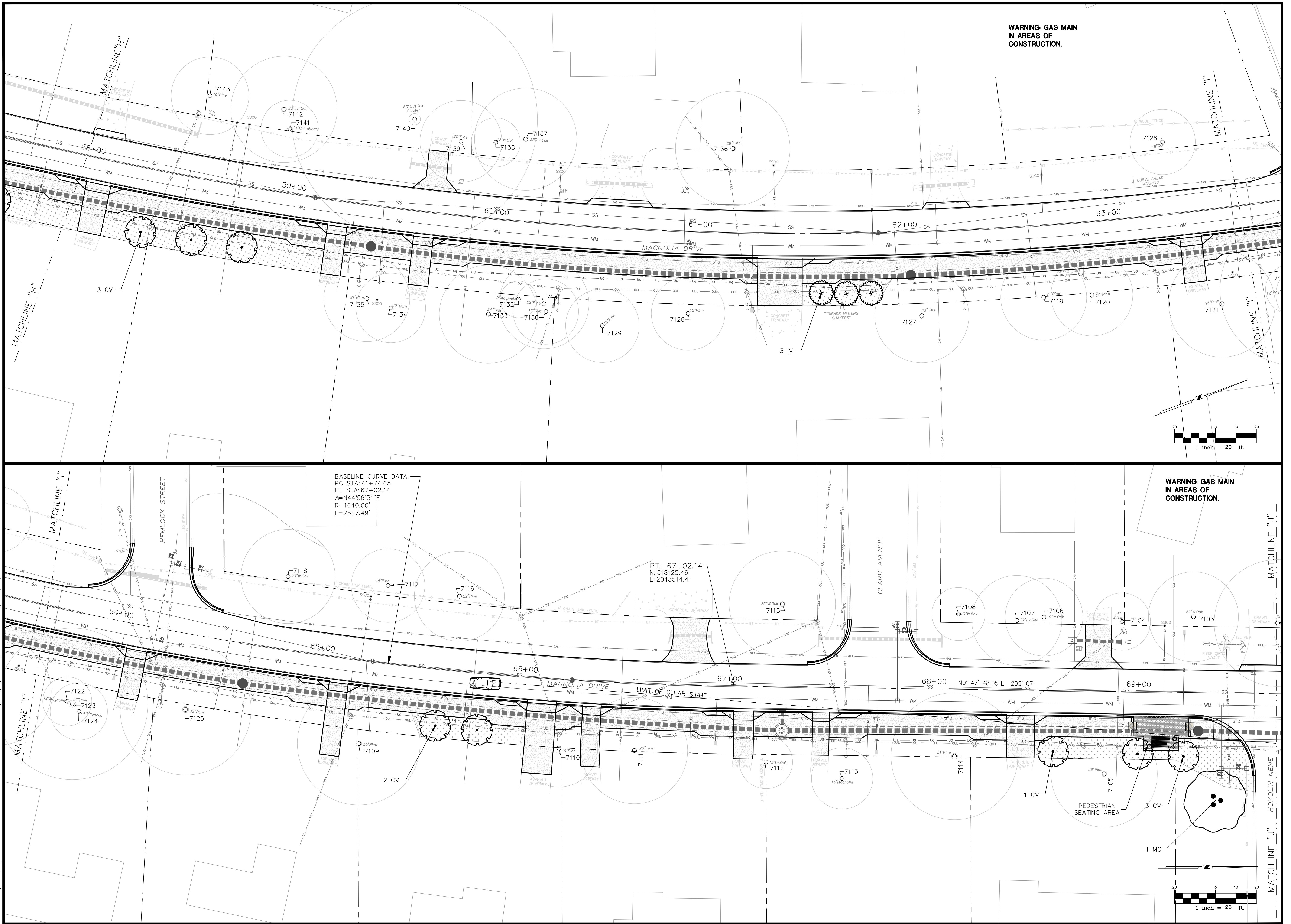
PROJECT
**Magnolia Drive Multi-Use Trail
 and Water & Sewer Replacement
 from Pontiac Dr to Diamond St**



CLIENT

ATKINS
 2639 N. Monroe St. Building C
 Tallahassee, Florida 32303
 850.575.1800
 FBR Certificate of Authorization No. 24

G:\Civil Projects\Magnolia-Dr-Trial-100037864-100038929-100041888\Design\Cad\Magnolia-landsc.dwg 02/17/2017 04:41:23 PM



BASELINE CURVE DATA:
 PC STA: 41+74.65
 PT STA: 67+02.14
 $\Delta = N44^{\circ}56'51''E$
 $R = 1640.00'$
 $L = 2527.49'$

PT: 67+02.14
 N: 518125.46
 E: 2043514.41

68+00 $N0^{\circ}47'48.05''E$ 2051.07'

JOB NO. 100038929

DRAWN	YC
DESIGNED	PF
CHECKED	OC
SHEET L6	

ORIGINAL: FEB. 17, 2017

REVISIONS:	1	2	3	4	5

TASK

LANDSCAPE PLAN

PROJECT

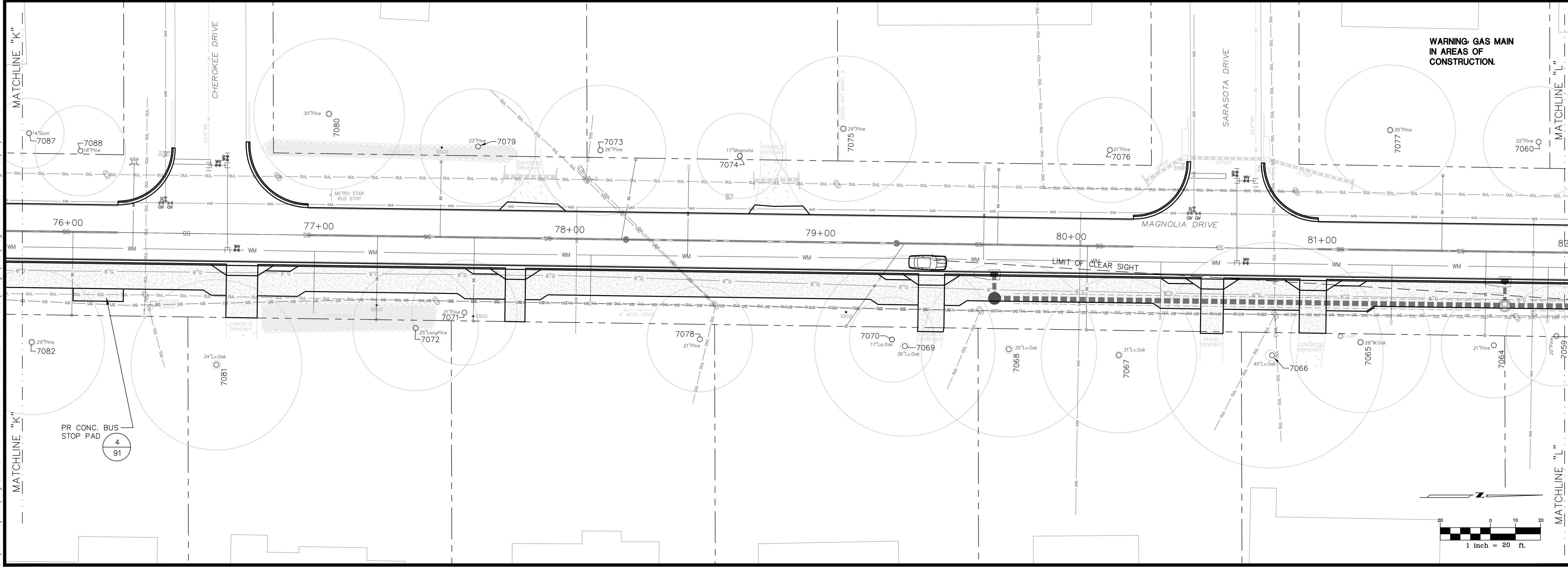
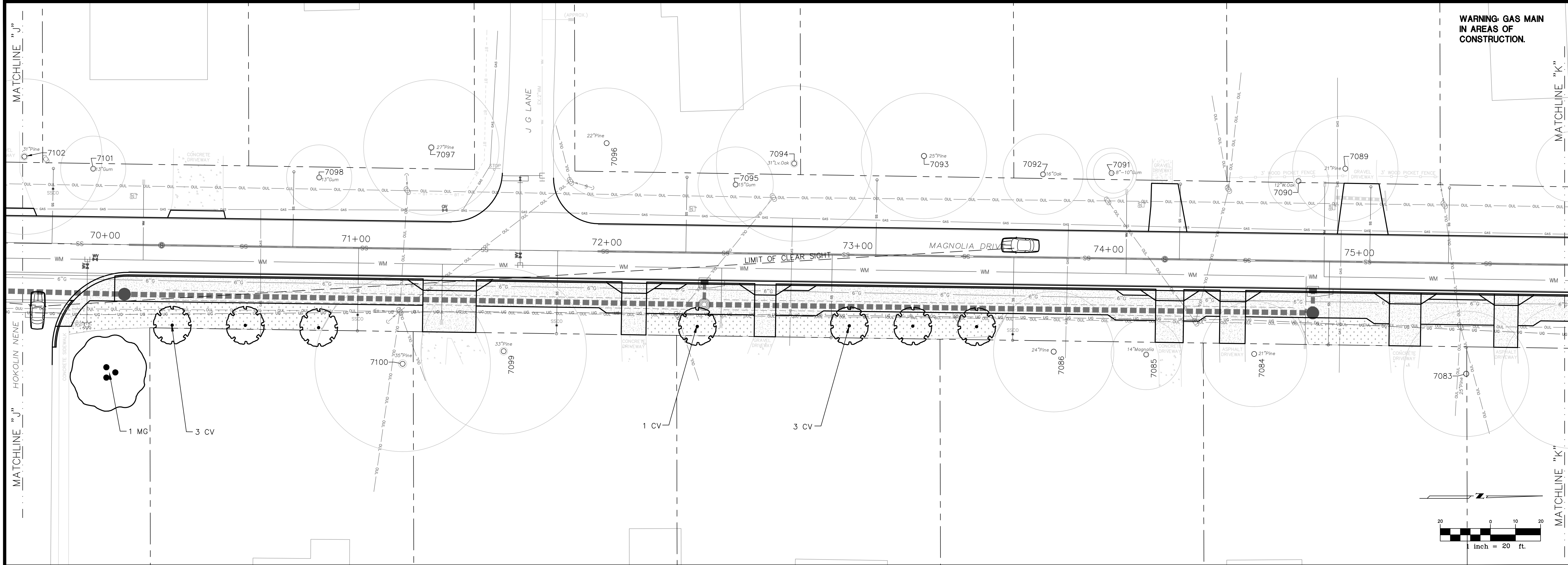
Magnolia Drive Multi-Use Trail and Water & Sewer Replacement from Pontiac Dr to Diamond St



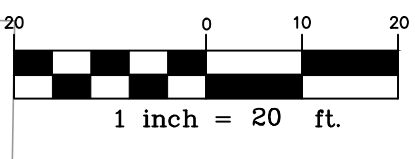
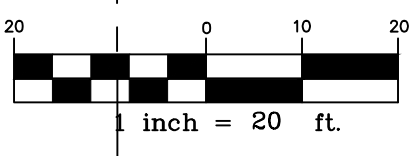
CLIENT

2639 N. Monroe St. Building C
 Tallahassee, Florida 32303
 850.575.1800
 FBR Certificate of Authorization No. 24

G:\Civil\Projects\Magnolia-Dr-Trail-100037864-100048888\Design\Cad\Magnolia-landsc.dwg 02/17/2017 04:40:37 PM



WARNING: GAS MAIN
IN AREAS OF
CONSTRUCTION.



JOB NO. 100038929

DRAWN	YC
DESIGNED	PF
CHECKED	OC
SHEET	L7

ORIGINAL: FEB. 17, 2017

REVISIONS:	
1	
2	
3	
4	
5	

TASK

LANDSCAPE PLAN

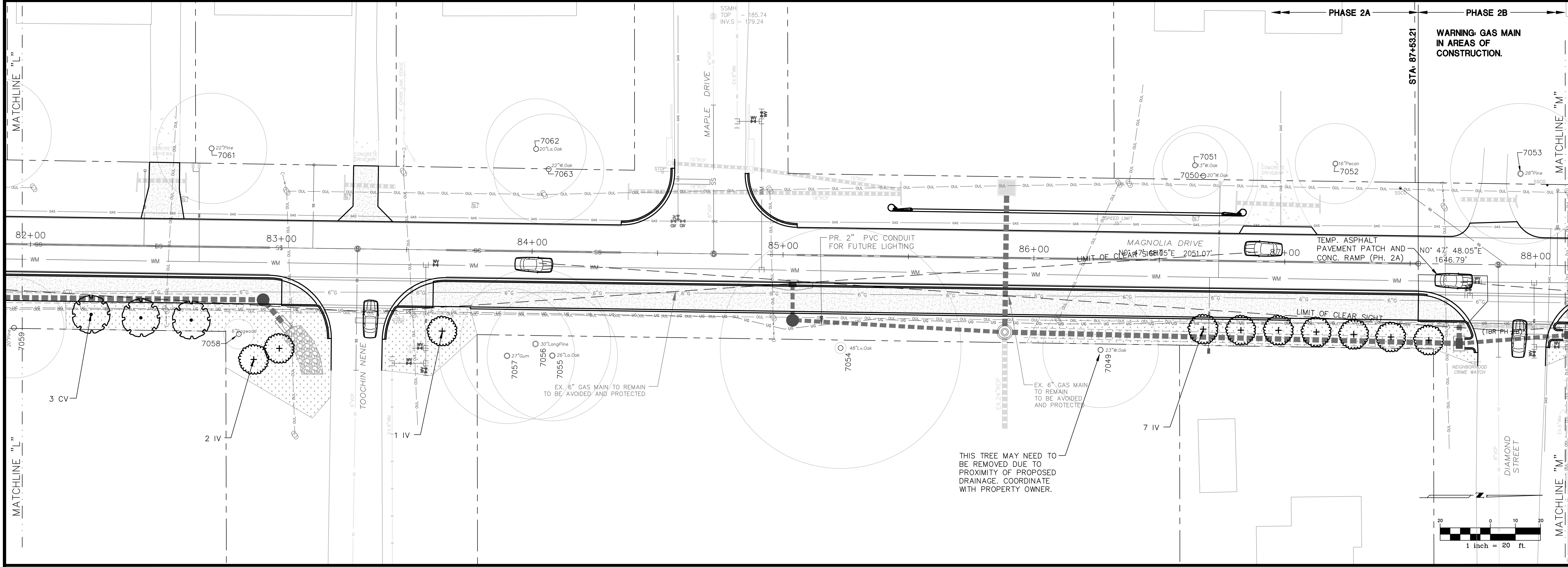
PROJECT

Magnolia Drive Multi-Use Trail and Water & Sewer Replacement from Pontiac Dr to Diamond St



CLIENT

ATKINS
2659 N. Monroe St. Building C
Tallahassee, Florida 32303
850.575.1800
FBR Certificate of Authorization No. 24



JOB NO. 100038929

DRAWN	YC
DESIGNED	PF
CHECKED	OC
SHEET L8	

ORIGINAL: FEB. 17, 2017

REVISIONS:	1	2	3	4	5

TASK

LANDSCAPE PLAN

PROJECT

Magnolia Drive Multi-Use Trail and Water & Sewer Replacement from Pontiac Dr to Diamond St

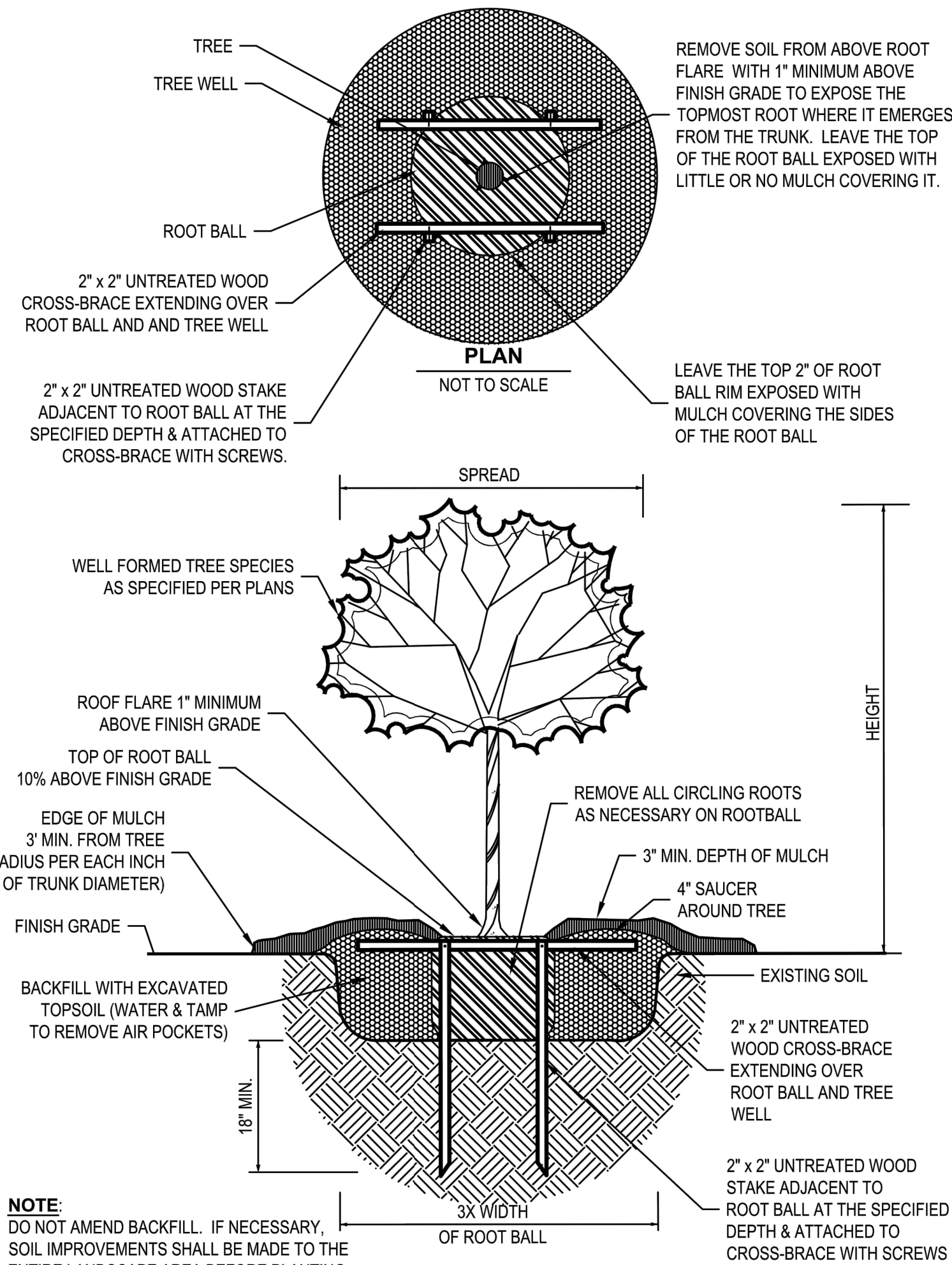


CLIENT

2659 N. Monroe St. Building C
Tallahassee, Florida 32303
850.575.1800
FBPR Certificate of Authorization No. 24

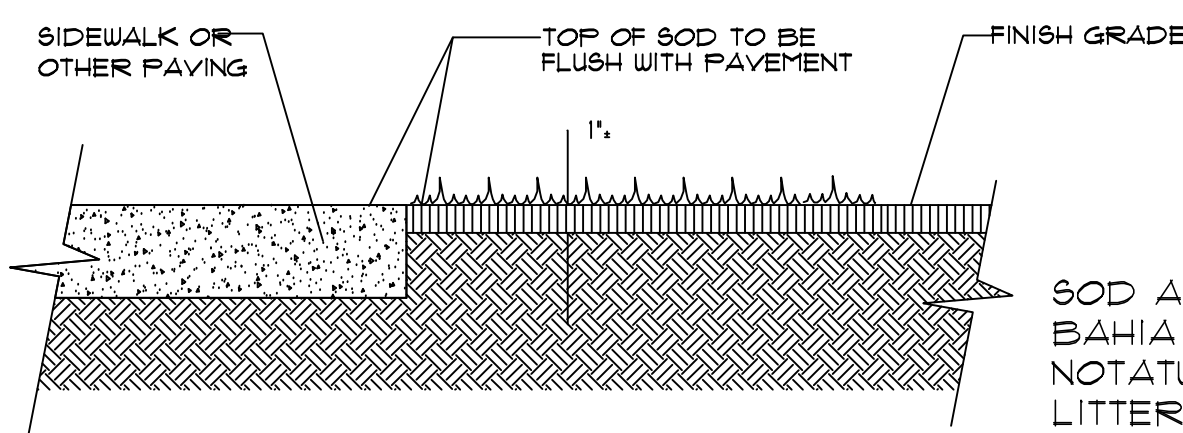
HARDSCAPE SCHEDULE

Qty.	Unit	Description	Specifications
2	EACH	Bench	6'; Victor Stanley; PRS-10; Black; or Approved Equal
2	EACH	Swing	6' Porch Swing; The Porch Swing Company; Ted's Porch Swings Pollback I Porch Swing; Thompson's Water Seal; Color: Early American; or Approved Equal
2	EACH	Porch Swing Pergola	6'x9' Trex Pergola; Structure Works Fabrication; Color: Bronze; or Approved Equal; Contractor Needs to Submit Shop Drawings For Approval
3	EACH	Trash Receptacle	Victor Stanley; RSDC-36; Black; or Approved Equal
1	EACH	Bike Rack	Victor Stanley; BRBS-103; Black; or Approved Equal
1,097	SF	Pavers	Belgard; Eco-Holland; 4"x8"x3-1/2"; Color: Harvest Blend; Running Bond; or Approved Equal
6	EACH	Precast Concrete Logo	Gate Precast Company; 3'x3'x4"; Color: Scofield; Lithochrome Color Hardener; Burberry Beige; Contractor Needs to Submit Shop Drawings For Approval
78	SF	Color Concrete	Scofield; Integral Color SG; Color: SG677-2; or Approved Equal



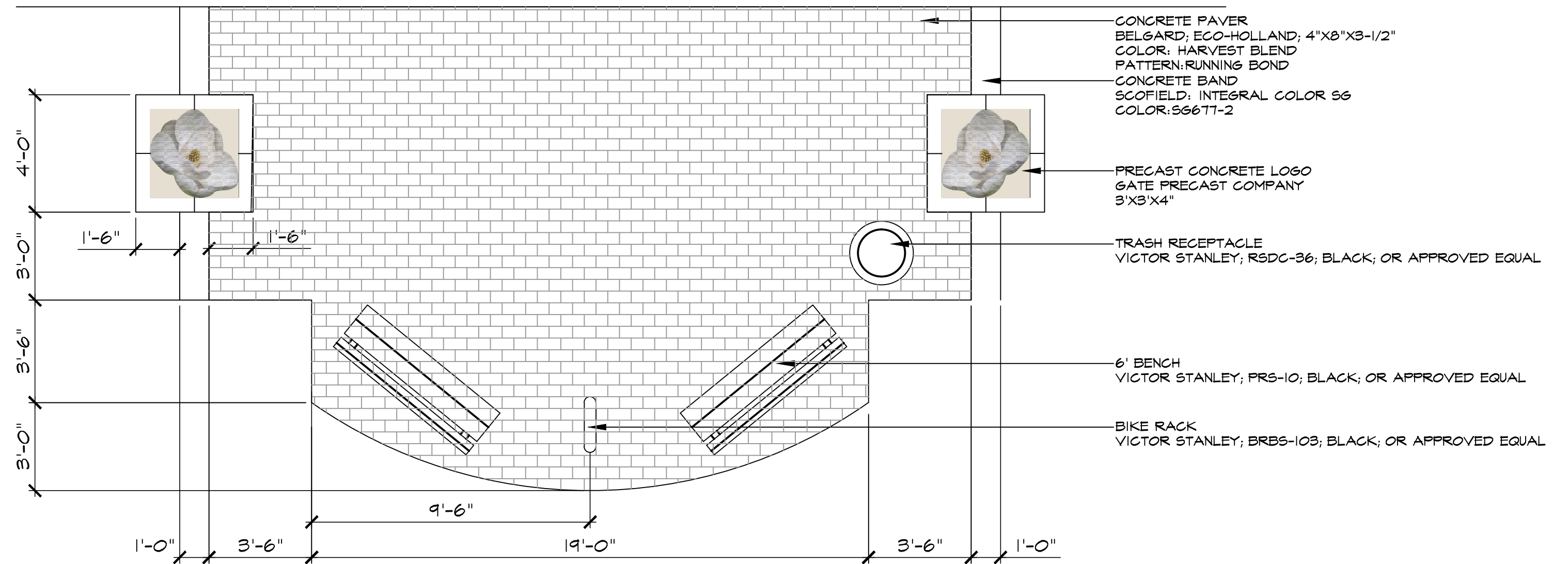
TREE PLANTING DETAIL

NOT TO SCALE



SOD PLACEMENT DETAIL

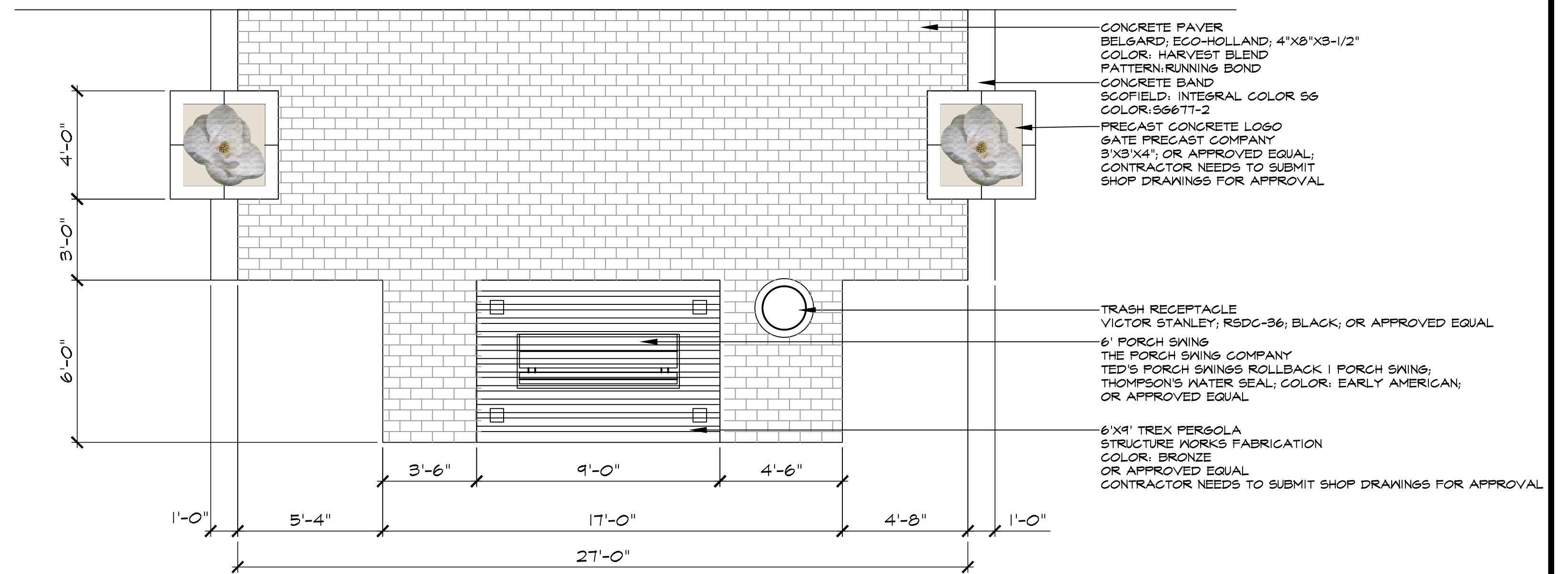
N.T.S.



PEDESTRIAN SEATING AREA

PERMIT ONLY DURING PHASE I TO BE BUILT WITH PHASE 2A (SEE SHEET L2 STA. 14+15)

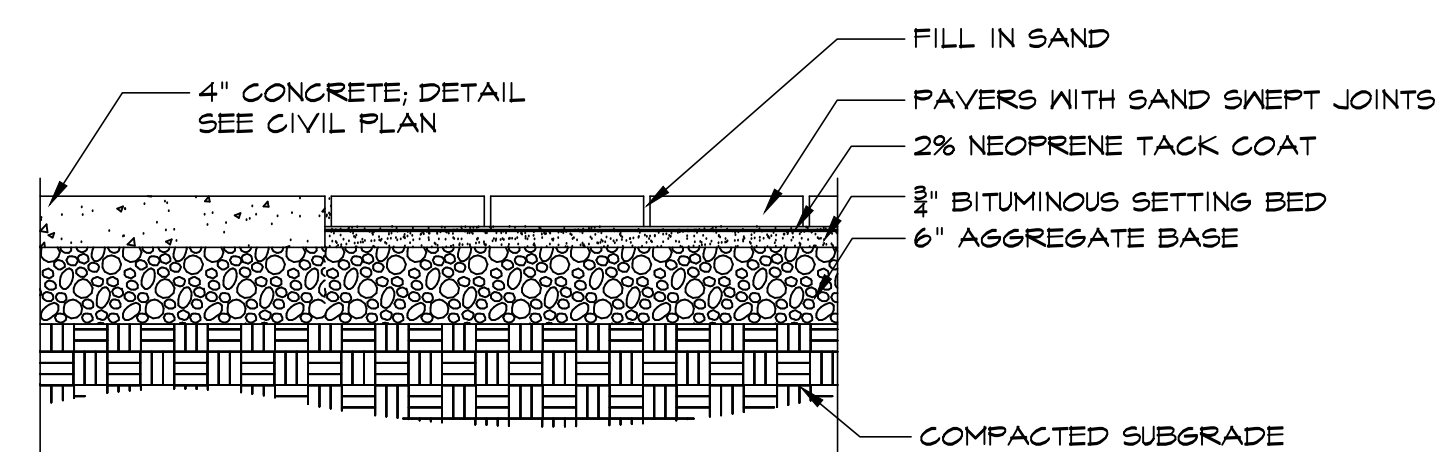
N.T.S.



PEDESTRIAN SWING AREA

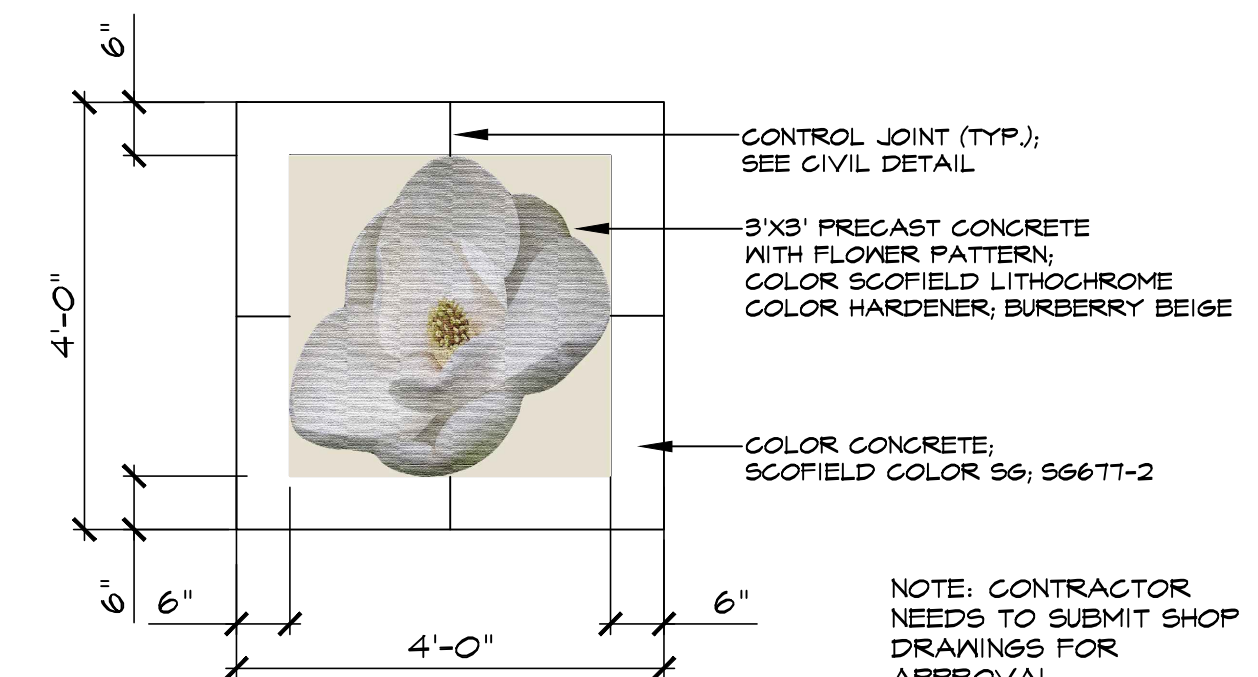
PHASE 2A (SEE SHEETS L5 & L6 STA. 49+00 & 69+10)

N.T.S.



PAVER DETAIL

N.T.S.



PRECAST CONCRETE MEDALLION

N.T.S.

G:\Civil Projects\Magnolia-Dr-Trail-100037864-Trail-100038929-100041888\Design\Cds\Magnolia-landsc.dwg 02/17/2017 04:38:48 PM

JOB NO. 100038929
DRAWN YC
DESIGNED PF
CHECKED OC
SHEET L10

ORIGINAL FEB. 17, 2017
REVISIONS:
1
2
3
4
5

TASK
LANDSCAPE DETAILS

PROJECT
Magnolia Drive Multi-Use Trail and Water & Sewer Replacement and Pontiac Dr to Diamond St



CLIENT

ATKINS
2639 N. Monroe St. Building C
Tallahassee, Florida 32303
850.575.1800
FPR Certificate of Authorization No. 24

PLANTING GENERAL NOTES

1. THE CONTRACTOR SHALL VERIFY THE EXISTENCE OF AND STAKE ALL UTILITIES PRIOR TO CONSTRUCTION. EXCAVATION OF PLANT PITS LOCATED WITHIN 5' OF UTILITIES SHALL BE PERFORMED BY HAND. ANY UTILITY/PLANT MATERIAL CONFLICTS SHALL BE BROUGHT TO THE ATTENTION OF THE LANDSCAPE ARCHITECT PRIOR TO INSTALLATION OR ANY FIELD ADJUSTMENTS. ANY TREES PLANTED WITHIN THE CPZ OF A TREE ON OR ADJACENT TO THE RIGHT OF WAY SHALL BE HAND DUG.
2. THE CONTRACTOR SHALL SUPPLY ALL PLANT MATERIALS IN QUANTITIES SUFFICIENT TO COMPLETE THE PLANTINGS SHOWN ON ALL DRAWINGS. ALL PLANTS SHALL MEET SIZE, CONTAINER, AND SPACING SPECIFICATIONS AS SHOWN IN THE PLANT SCHEDULE. THE CONTRACTOR SHALL GUARANTEE PLANT HEALTH AND SURVIVABILITY FOR ONE YEAR FROM DATE OF PROJECT ACCEPTANCE. ANY MATERIAL NOT MEETING SPECIFICATIONS OR DISPLAYING POOR HEALTH SHALL BE REPLACED AT CONTRACTOR'S EXPENSE.
3. ALL PLANT MATERIAL SHALL BE FLORIDA NO. 1 OR BETTER AS SET FORTH IN 'GRADES AND STANDARDS FOR NURSERY PLANTS, SECOND EDITION' STANDARDS AND DESIGNATIONS. NOTIFY CITY STAFF AND LANDSCAPE ARCHITECT A MINIMUM OF ONE WEEK PRIOR TO PLANT DELIVERY TO SCHEDULE INSPECTION AND APPROVAL. INSTALLED PLANT MATERIAL NOT MEETING SPECIFICATIONS SHALL BE REMOVED AND REPLACED AT CONTRACTOR'S EXPENSE.
4. THE LANDSCAPE ARCHITECT RESERVES THE RIGHT TO MAKE PLANTING BED FIELD CHANGES TO ACCOMMODATE SITE CONDITIONS AND TO ACHIEVE THE DESIGN INTENT. THE LANDSCAPE CONTRACTOR SHALL FLAG ALL TREE AND BEDLINE LOCATIONS FOR APPROVAL BY LANDSCAPE ARCHITECT PRIOR TO ANY INSTALLATION.
5. ALL PLANTS SHALL RECEIVE A 3" LAYER OF PINE STRAW MULCH. ALL TREES NOT IN A SHRUB/GROUND COVER BED SHALL RECEIVE A LAYER OF MULCH SIX FEET IN DIAMETER AND 3" THICK WITH NO MULCH OVER THE ROOT BALL.
6. THE LANDSCAPE CONTRACTOR SHALL CONDUCT REPRESENTATIVE SOIL ANALYSIS PRIOR TO THE INSTALLATION OF ANY PLANT MATERIAL. THE LANDSCAPE CONTRACTOR SHALL NOTIFY THE LANDSCAPE DESIGNER OF ANY IMPROPER SOIL CONDITION (NUTRITIONAL DEFICIENCIES, WETNESS, MUCK, DEBRIS, ETC.) AND SHALL RECOMMEND FOR APPROVAL, PRIOR TO INSTALLATION, ALL SOIL AMENDMENTS THAT MAY BE NECESSARY TO PROMOTE HEALTHY, VIGOROUS PLANT GROWTH.
7. THE LANDSCAPE CONTRACTOR SHALL REPAIR OR REPLACE ANY EXISTING VEGETATION DISTURBED BY PLANT MATERIAL INSTALLATION ACTIVITIES. THIS REPAIR/REPLACEMENT SHALL BLEND SEAMLESSLY WITH THE EXISTING LANDSCAPE. ALL DISTURBED AREAS WILL BE SODDED.
8. THE LANDSCAPE CONTRACTOR SHALL COORDINATE WITH THE GENERAL CONTRACTOR IN PREPARING PLANTING AREA FINAL GRADE ELEVATIONS.
9. LANDSCAPE CONTRACTOR SHALL NOTIFY LANDSCAPE ARCHITECT A MINIMUM OF 48 HOURS PRIOR TO COMPLETION TO SCHEDULE FINAL WALK THROUGH. A FINAL WALK THROUGH SHALL NOT BE PERFORMED IF PREVIOUS PUNCH LISTS ARE NOT COMPLETED.
10. ANY CHANGES MADE TO THE REGULATED PLANT MATERIAL IN THE LANDSCAPE PLAN MUST ALSO BE APPROVED BY THE GROWTH MANAGEMENT DEPARTMENT.
11. THE MITIGATION PLAN ON SHEET L5 SHALL BE FOLLOWED FOR ALL TREES IMPACTED WITHIN AND ADJACENT TO THE PROPOSED WORK AREA.

PLANT SCHEDULE

PHASE I

TREES	QTY	BOTANICAL NAME	COMMON NAME	CONTAINER	SPECIFICATIONS
CV	7	CHIONANTHUS VIRGINICUS	WHITE FRINGETREE	BB; MULTI-TRUNK	6' HT. X 42" SPD. MIN.
CF	3	CORNUS FLORIDA 'WEAVER'	WEAVER DOGWOOD	30 GAL.; 2" CAL.	8' HT. X 4' SPD. MIN.
IV	11	ILEX VOMITORIA	YAUPON HOLLY	BB; MULTI-TRUNK	6' HT. X 42" SPD. MIN.
LT	3	LIRIODENDRON TULIPIFERA	TULIP POPLAR	30 GAL.; 2" CAL.	6' HT. X 42" SPD. MIN.
SM	2	MAGNOLIA STELLATA	STAR MANOLIA	30 GAL.; MULTI-TRUNK	6' HT. X 42" SPD. MIN.
MS	2	MAGNOLIA X SOULANGIANA	SAUCER MAGNOLIA MULTI-TRUNK	30 GAL.; MULTI-TRUNK	6' HT. X 42" SPD. MIN.
MULCH	88 SY	PINE STRAW MULCH			

PLANT SCHEDULE

PHASE II

TREES	QTY	BOTANICAL NAME	COMMON NAME	CONTAINER	SPECIFICATIONS
CV	29	CHIONANTHUS VIRGINICUS	WHITE FRINGETREE	BB; MULTI-TRUNK	6' HT. X 42" SPD. MIN.
IV	30	ILEX VOMITORIA	YAUPON HOLLY	BB; MULTI-TRUNK	6' HT. X 42" SPD. MIN.
MG	2	MAGNOLIA GRANDIFLORA 'D.D. BLANCHARD' TM	SOUTHERN MAGNOLIA	FG; RFG	6' HT. X 42" SPD. MIN.
SM	2	MAGNOLIA STELLATA	STAR MANOLIA	30 GAL.; MULTI-TRUNK	6' HT. X 42" SPD. MIN.
QV	3	QUERCUS VIRGINIANA	SOUTHERN LIVE OAK	BB; 2" CAL.	8' HT. X 4' SPD. MIN.
MULCH	208 SY	PINE STRAW MULCH			

G:\Civil\Projects\Magnolia-Dr-Trail-100037864-Trail-100037864-100038929-100041888\Design\Cds\Magnolia-landsc.dwg 02/17/2017 04:37:51 PM

JOB NO. 100038929
 DRAWN YC
 DESIGNED PF
 CHECKED OC
 SHEET L11

ORIGINAL FEB. 17, 2017
 REVISIONS:
 1 _____
 2 _____
 3 _____
 4 _____
 5 _____

TASK
LANDSCAPE DETAILS

PROJECT
Magnolia Drive Multi-Use Trail and Water & Sewer Replacement from Pontiac Dr to Diamond St



CLIENT

ATKINS
 2639 N. Monroe St. Building C
 Tallahassee, Florida 32303
 850.575.1800
 FBRP Certificate of Authorization No. 24